

Appendix A

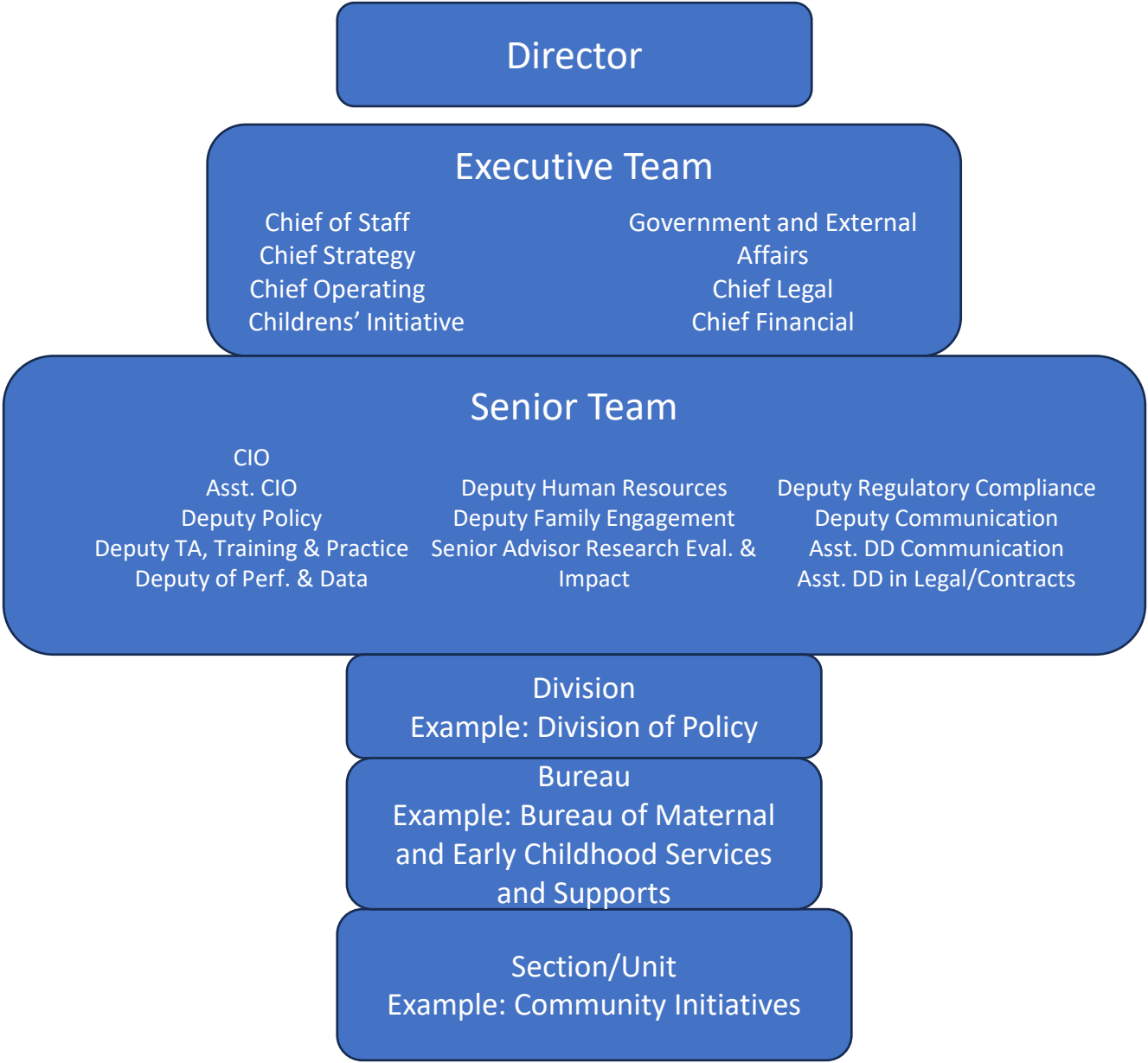
DCY Organizational Chart

March 2024

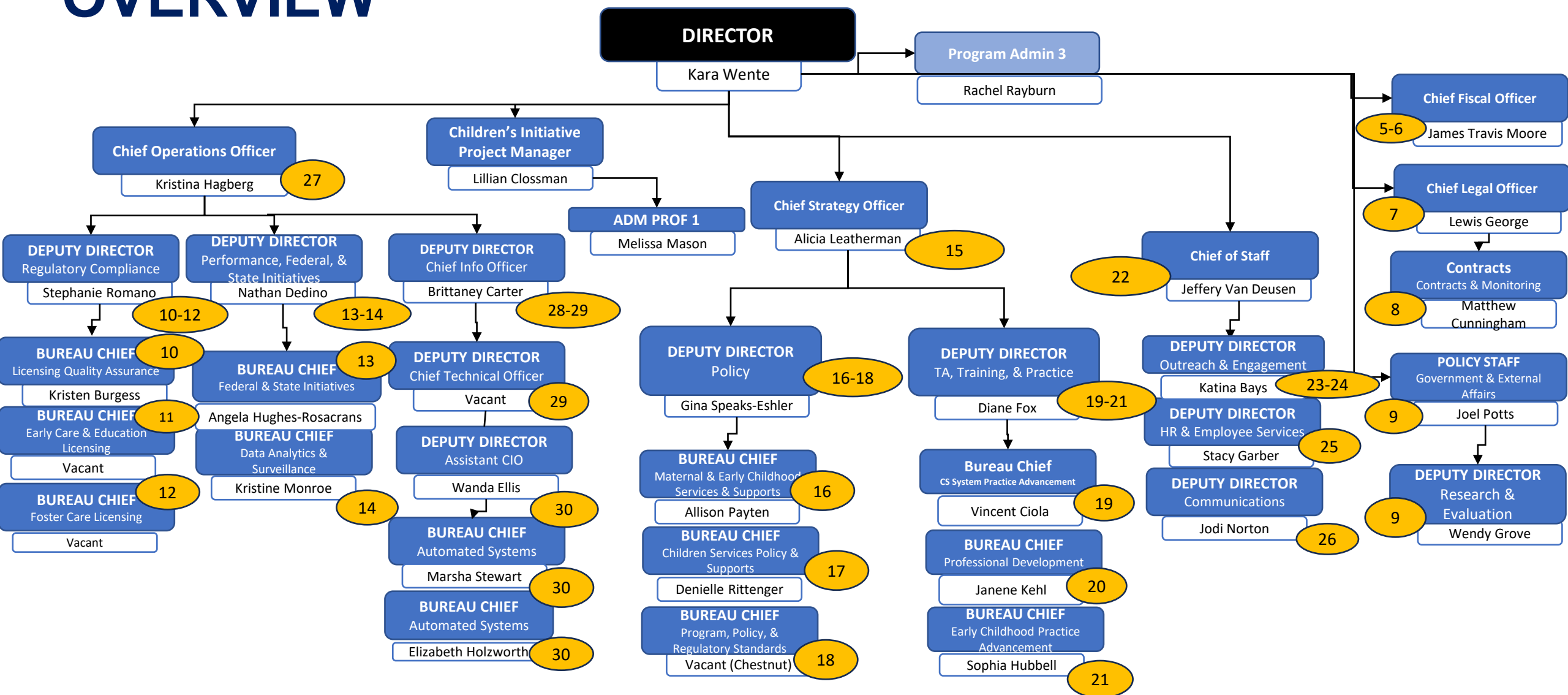
BUDGET INFORMATION

| Agency | Programs Impacted |
|------------------------------------|--|
| Developmental Disabilities | Early Intervention |
| Education | Early Childhood Education, Licensing, Preschool Special Education |
| Health | Home Visiting, Maternal and Infant Vitality |
| Job & Family Services | Children Services, Children's Trust Fund, Ohio Family and Children First, Fatherhood Commission, Licensing, Publicly Funded Child Care |
| Mental Health & Addiction Services | Early Childhood Mental Health, <i>Strong Families, Safe Communities</i> |
| Total | |

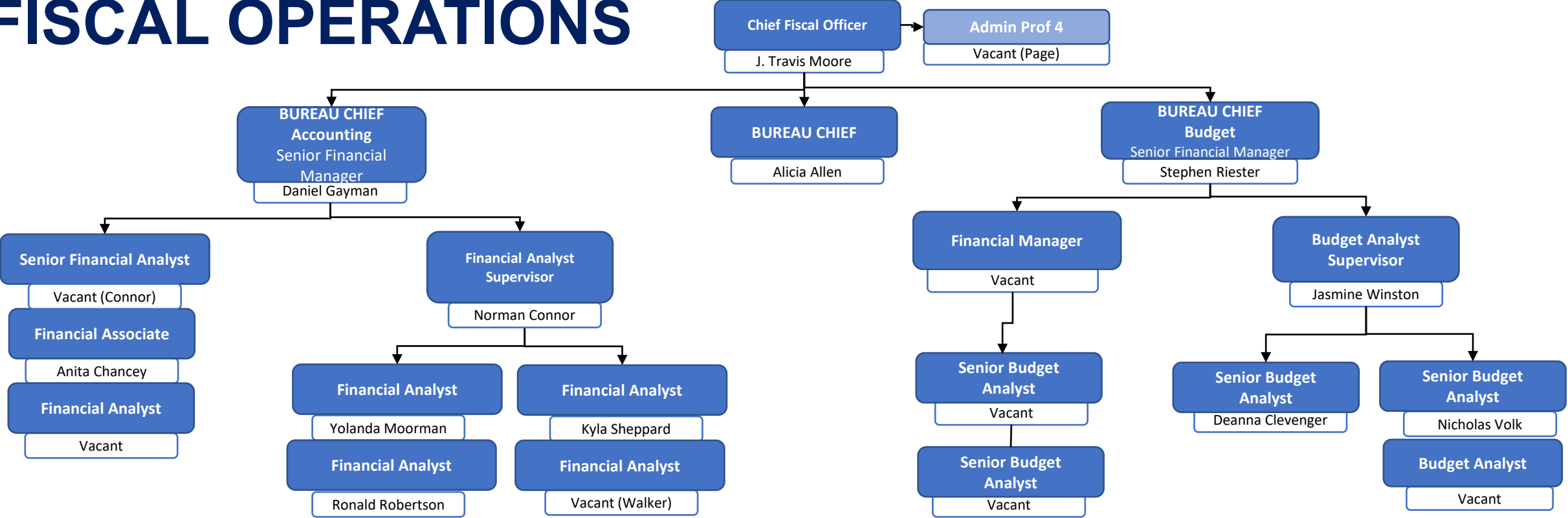
HIERARCHY



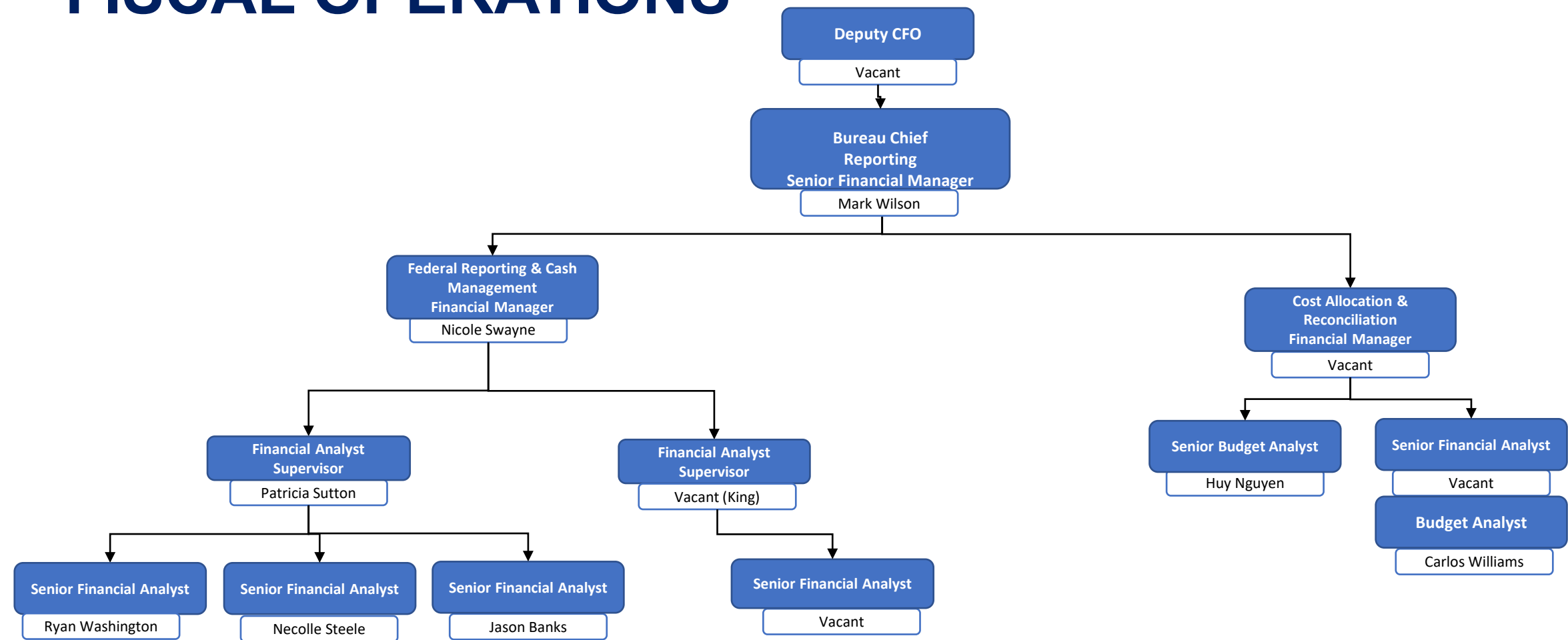
OVERVIEW



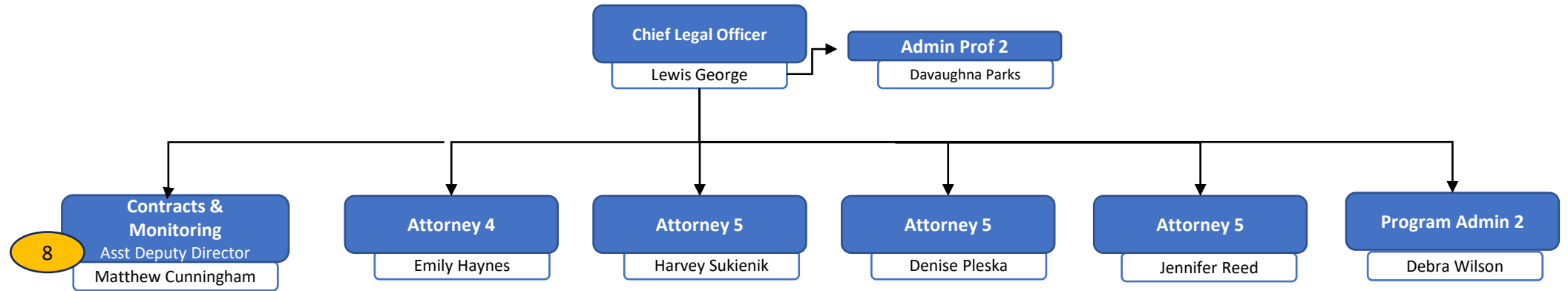
FISCAL OPERATIONS



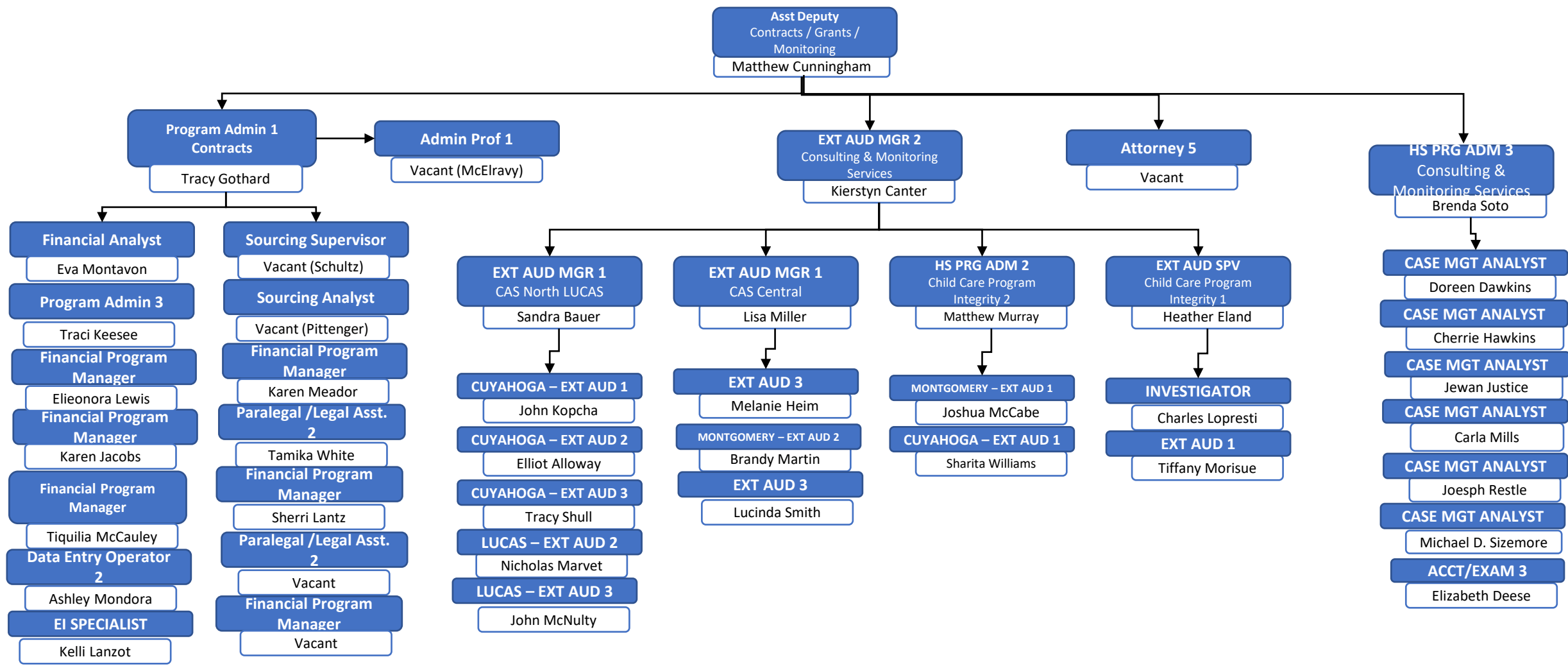
FISCAL OPERATIONS



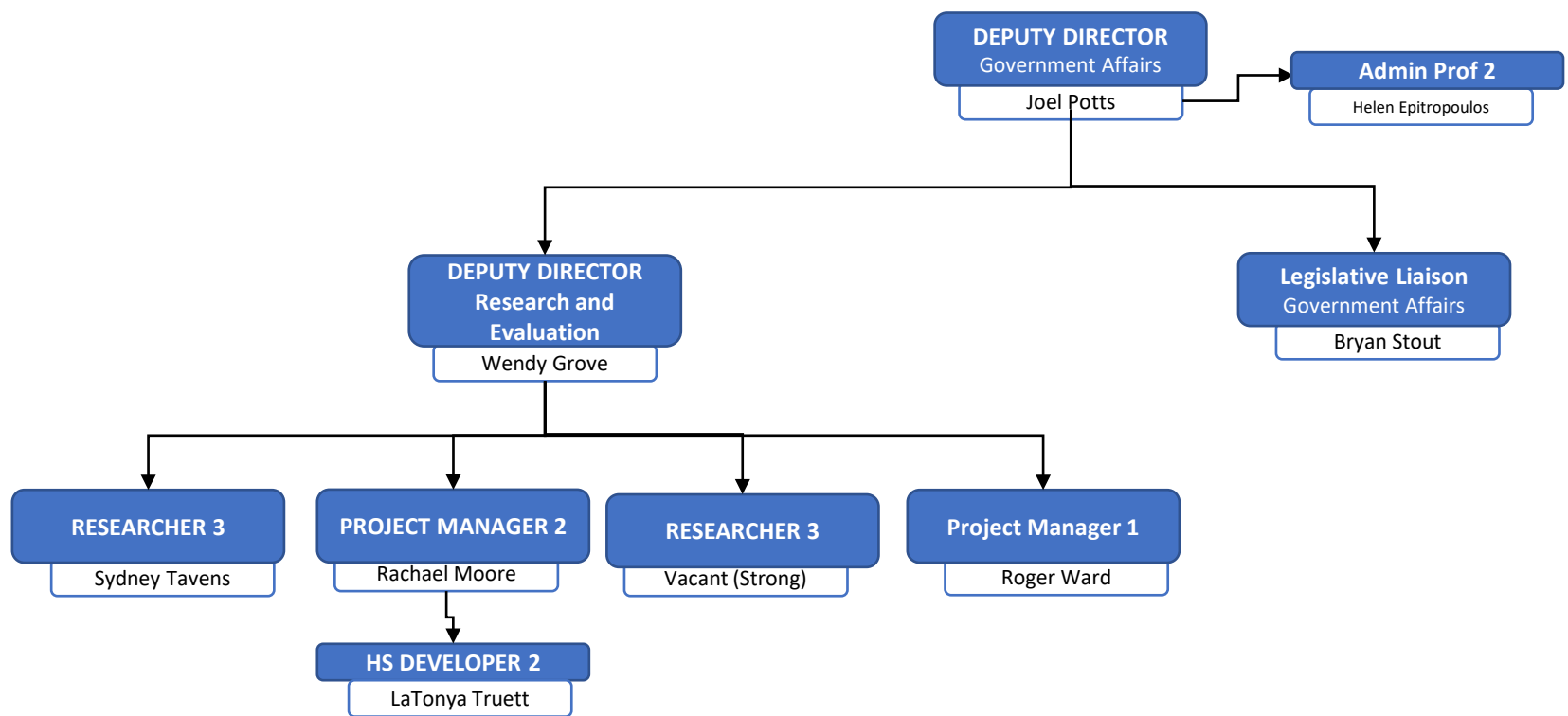
LEGAL, CONTRACTS, & MONITORING



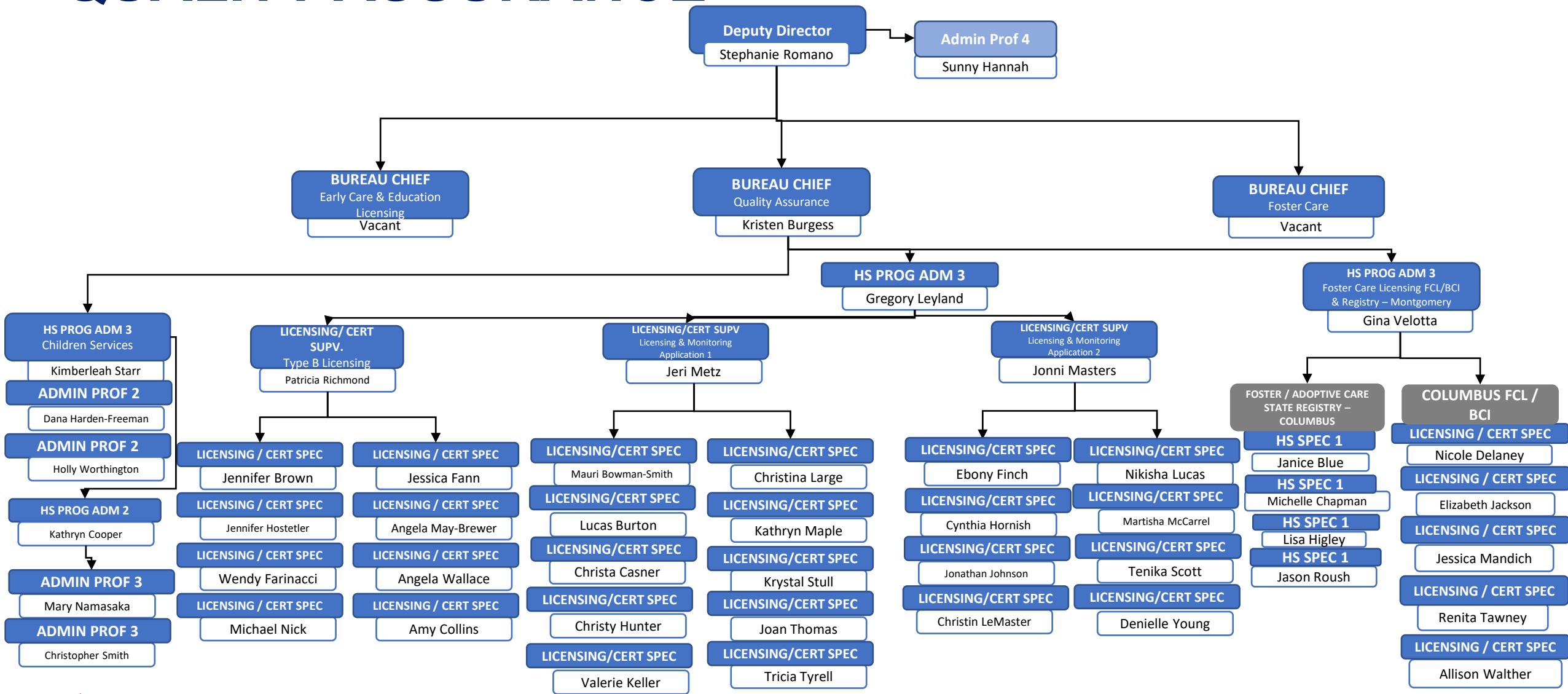
CONTRACTS, & MONITORING



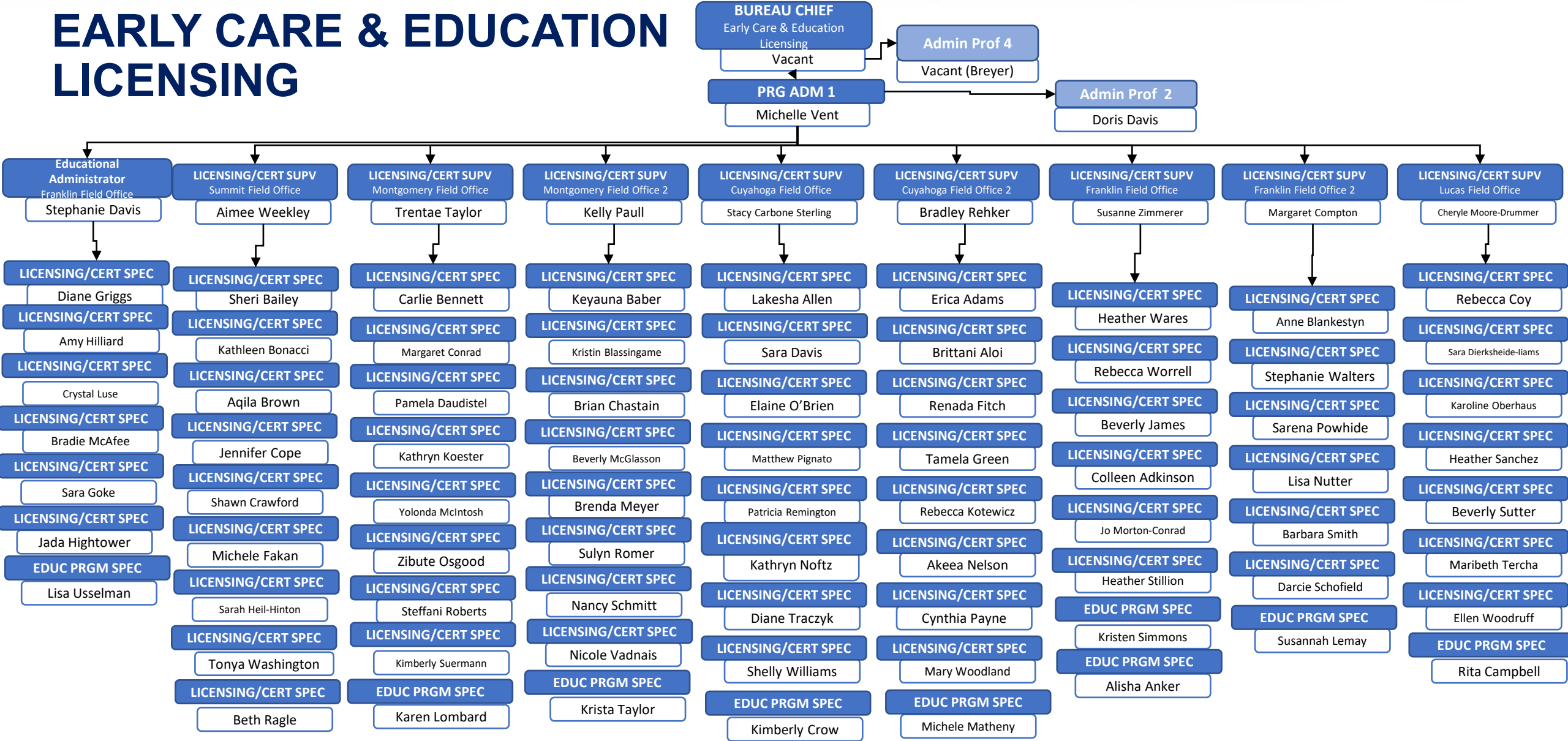
GOVERNMENT & EXTERNAL AFFAIRS



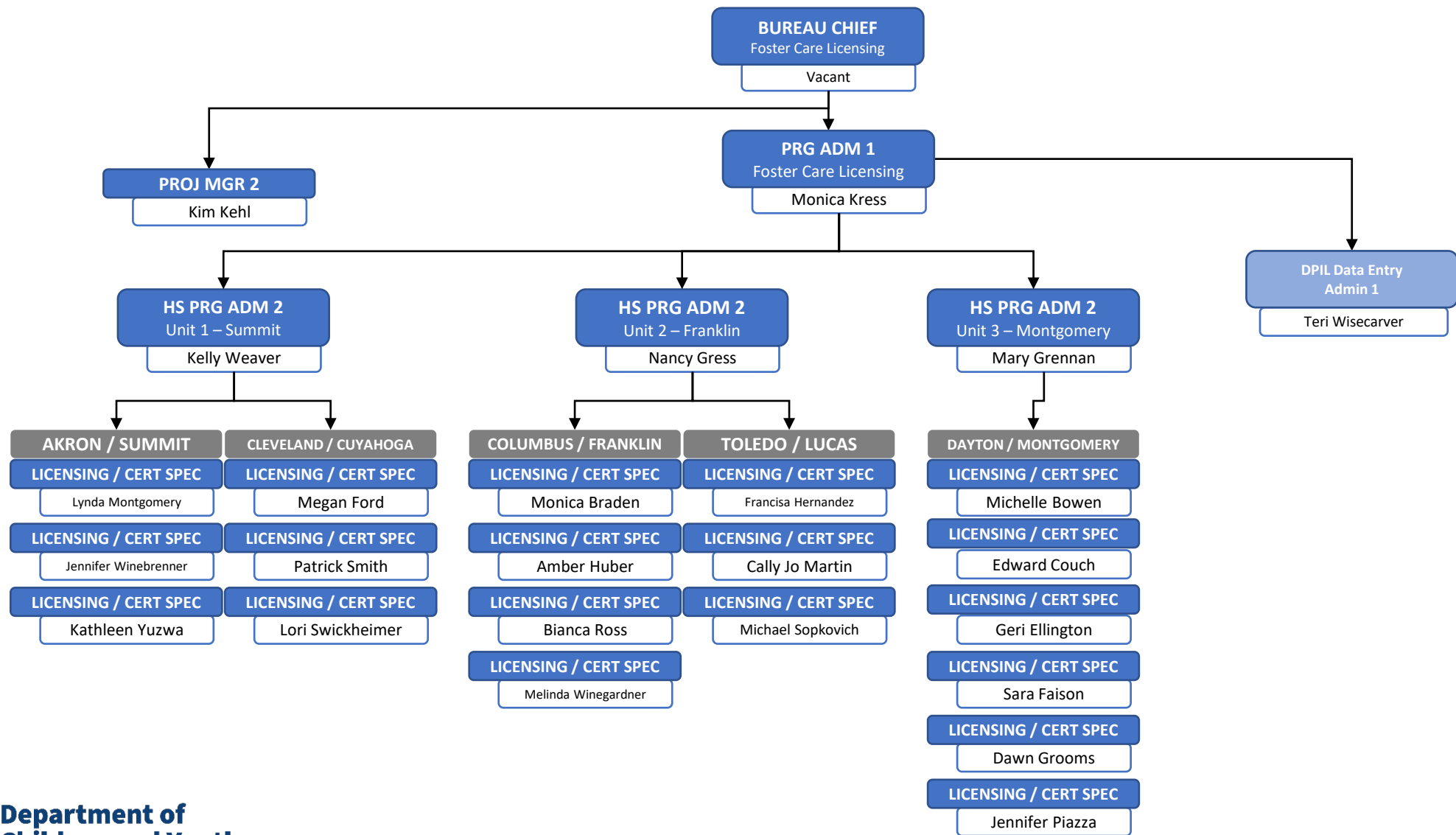
QUALITY ASSURANCE



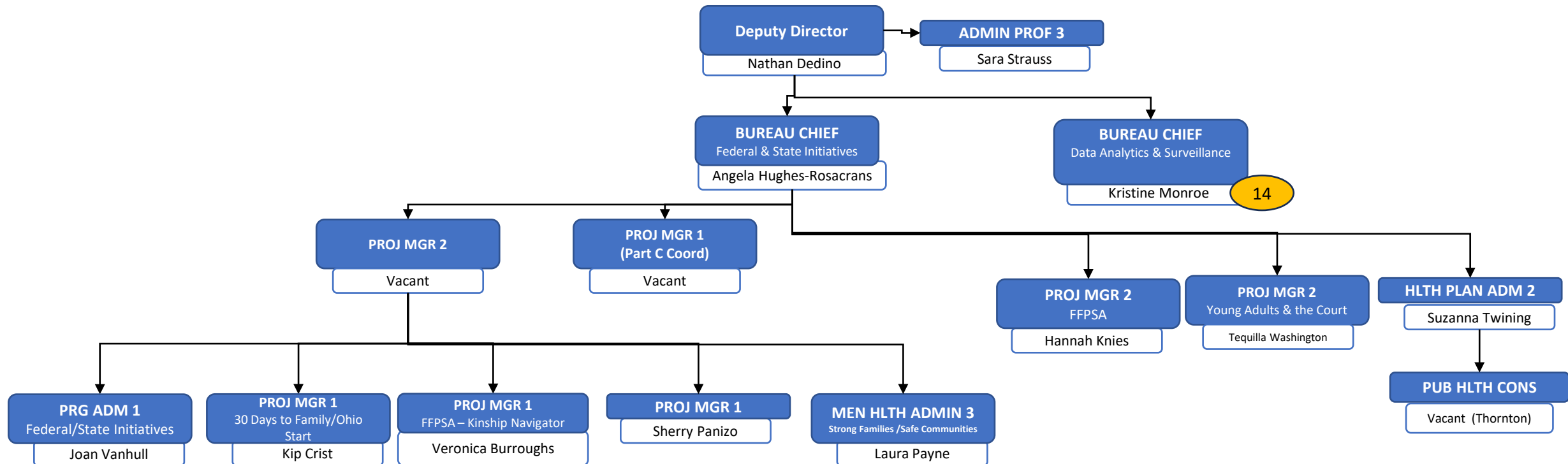
EARLY CARE & EDUCATION LICENSING



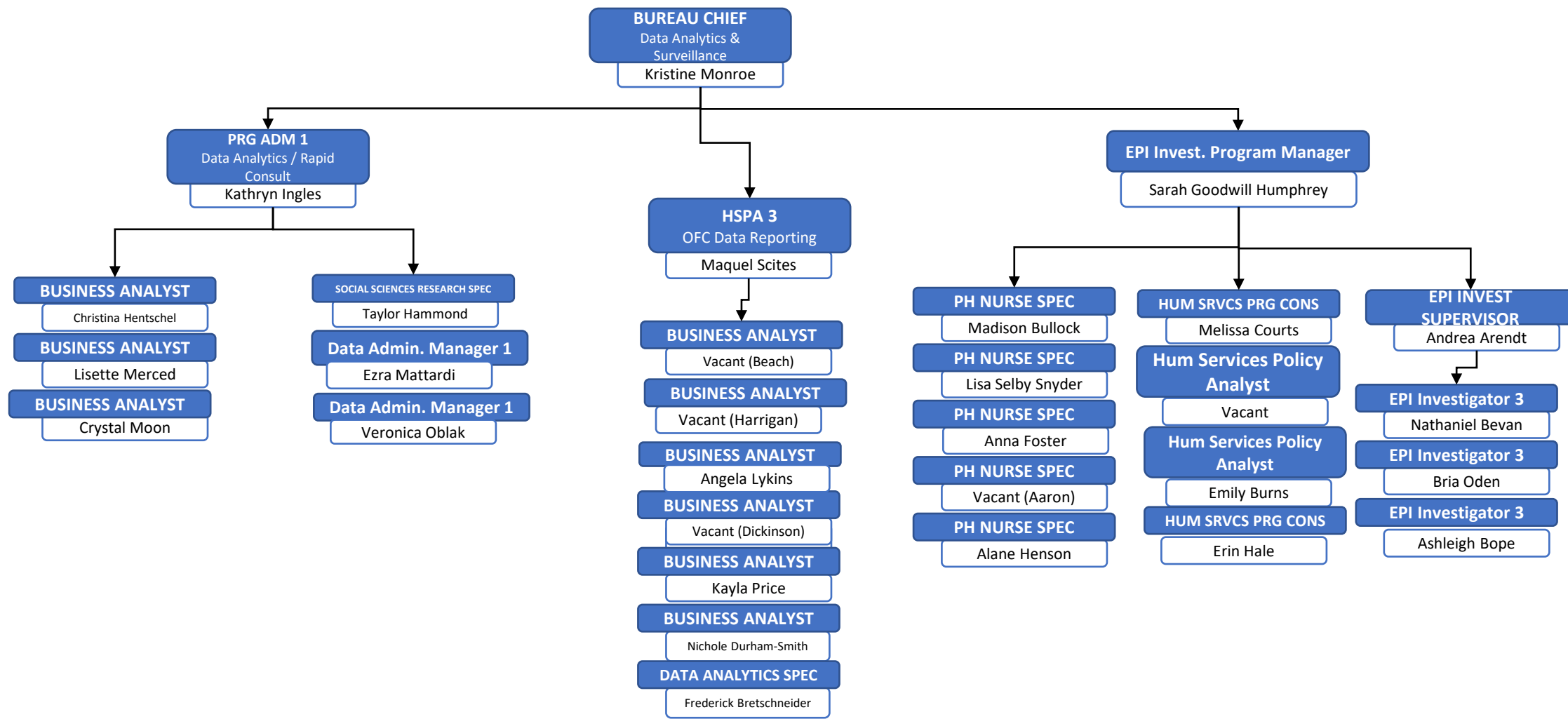
FOSTER CARE LICENSING



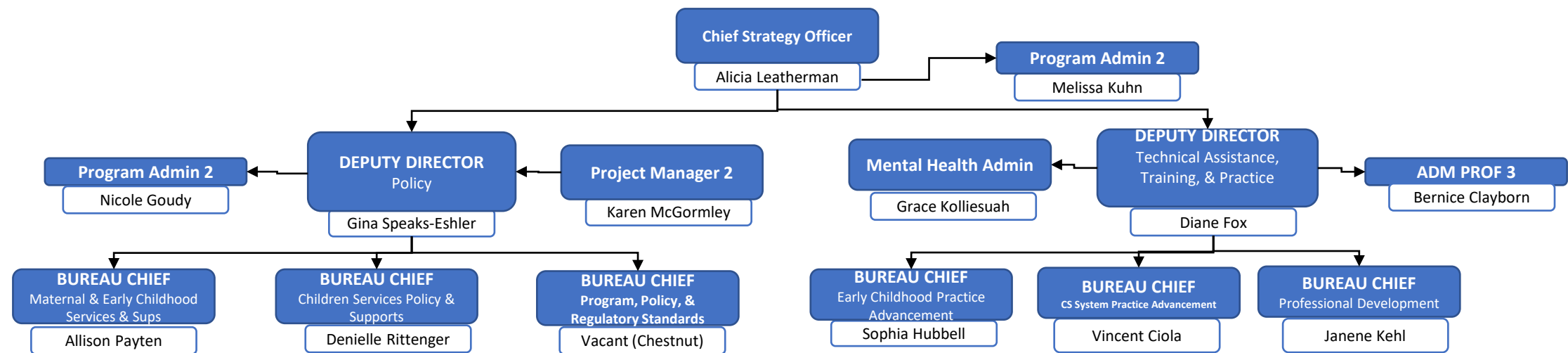
FEDERAL & STATE INITIATIVES



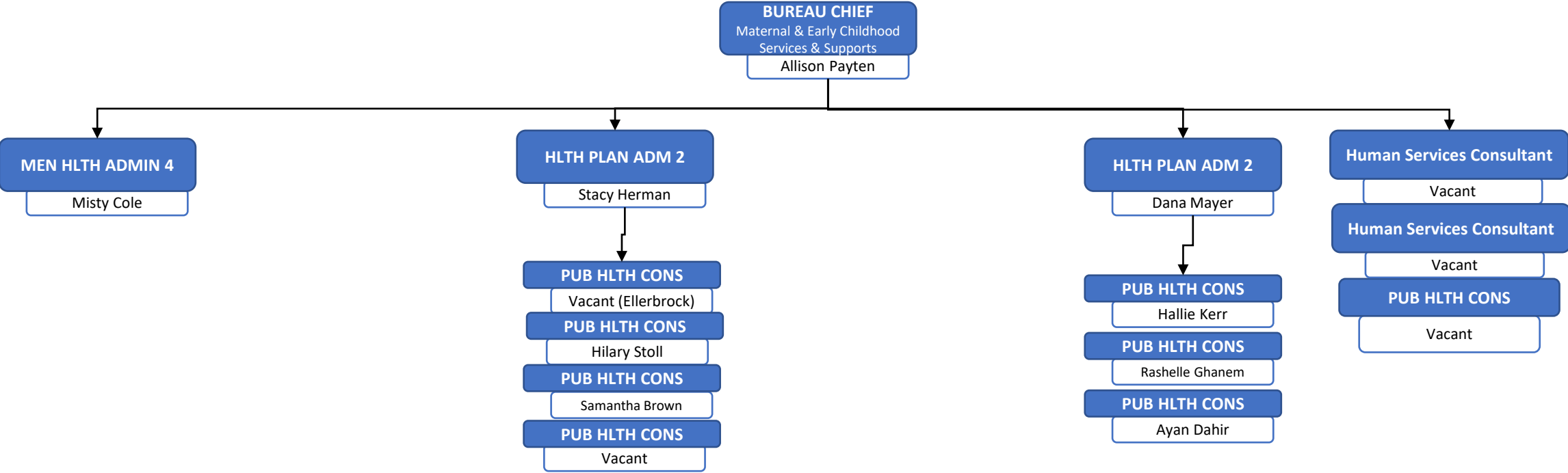
DATA ANALYTICS & SURVEILLANCE



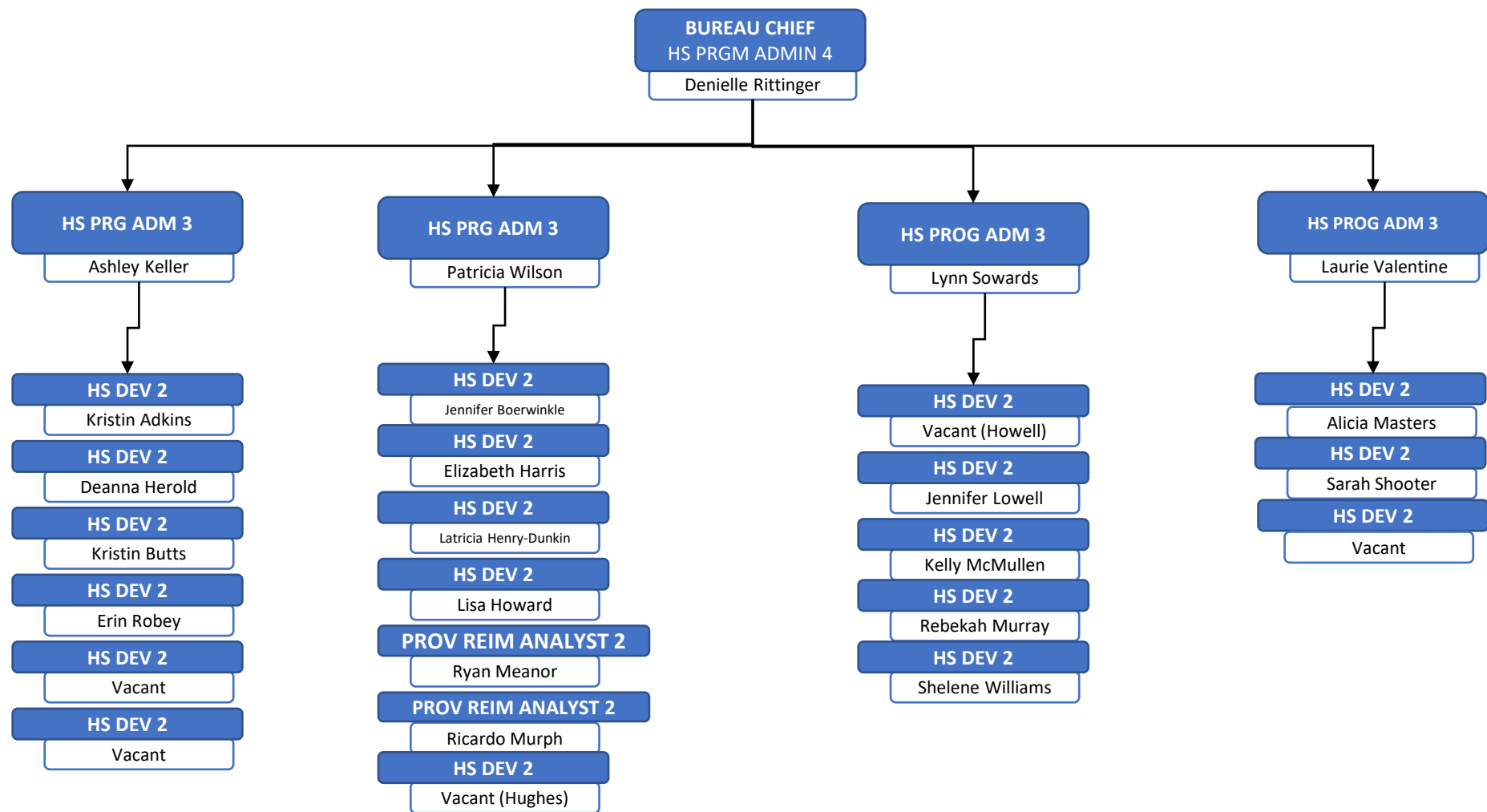
CHIEF STRATEGY OFFICER



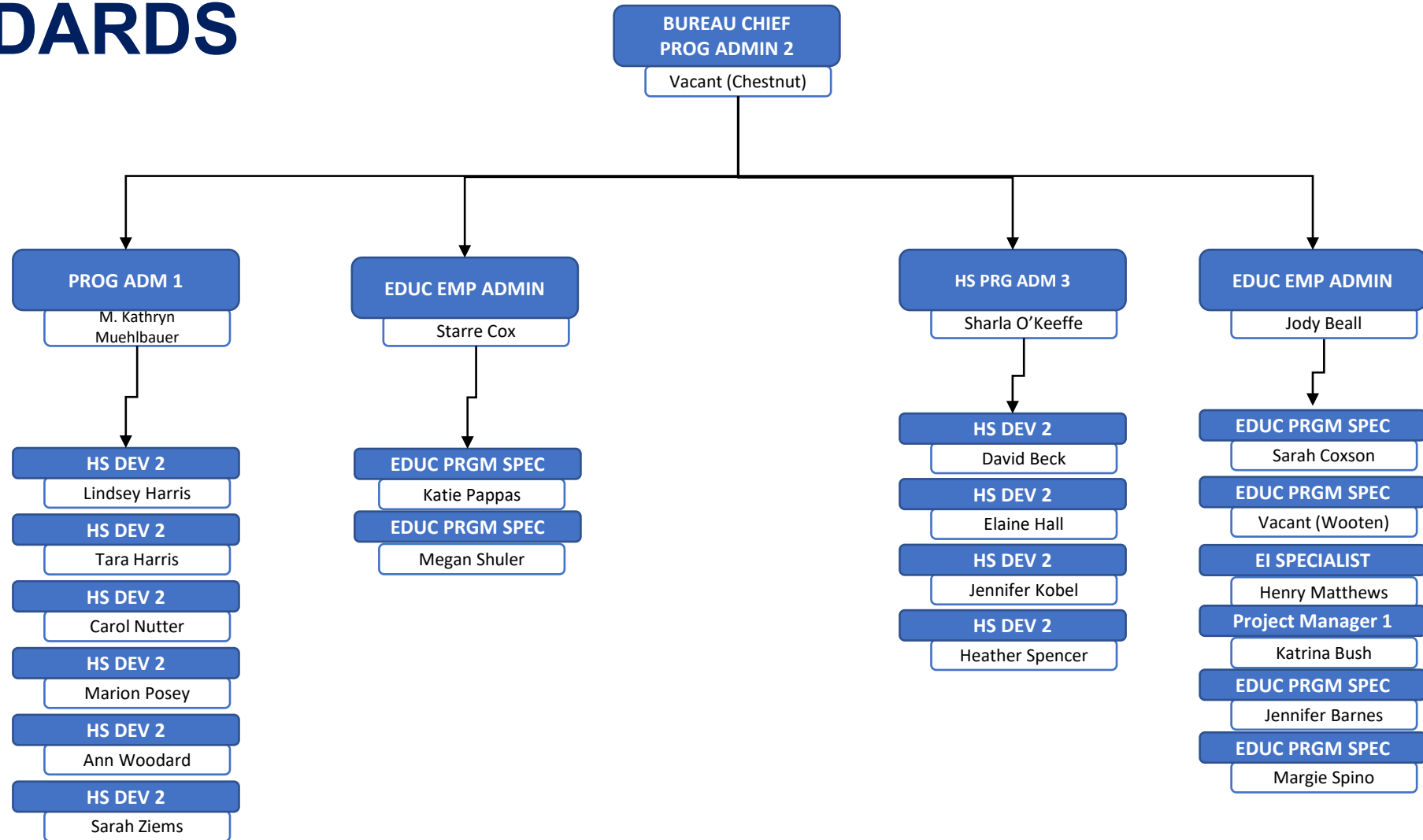
MATERNAL & EARLY CHILDHOOD SERVICES & SUPPORTS



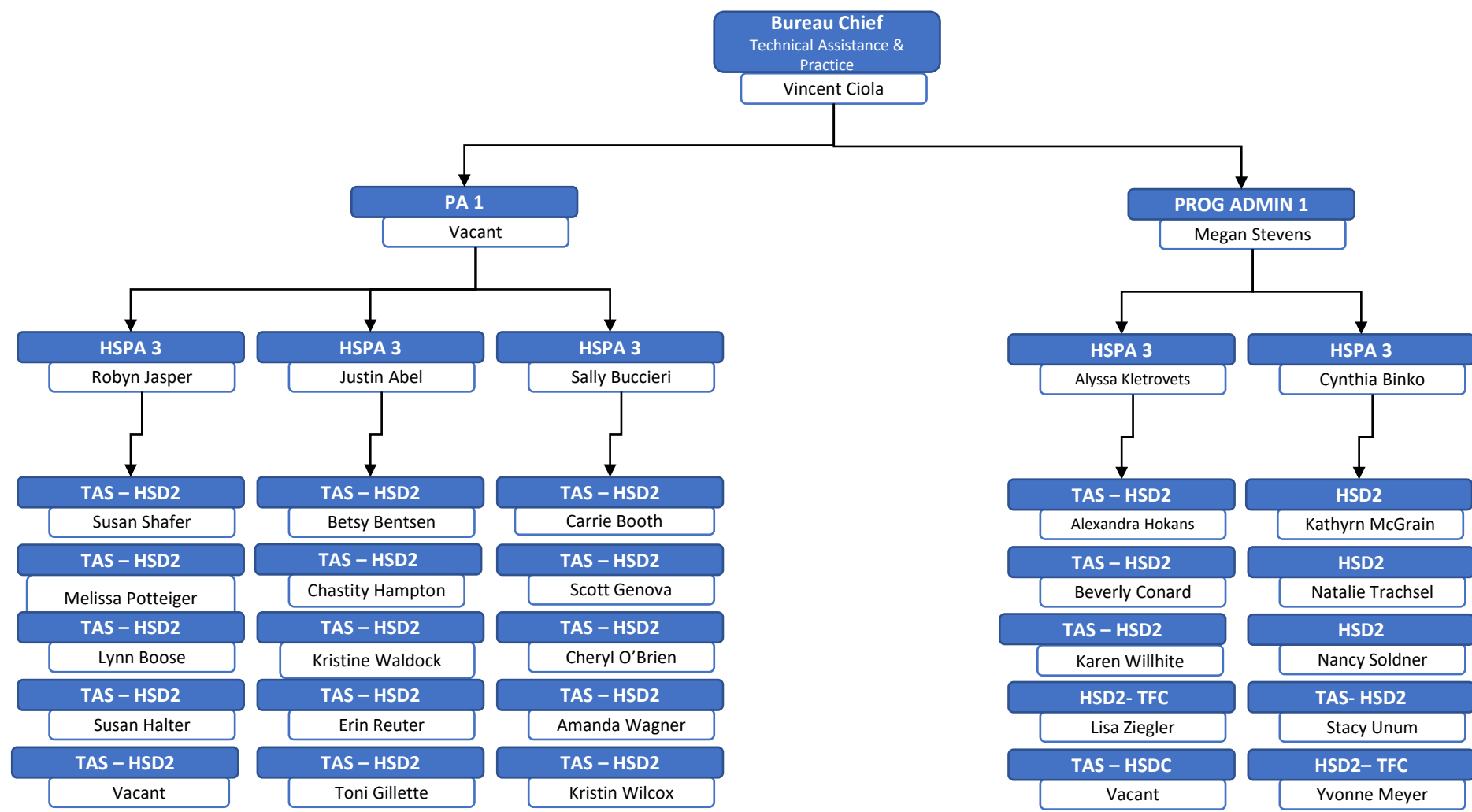
CHILDREN SERVICES POLICY & SUPPORTS



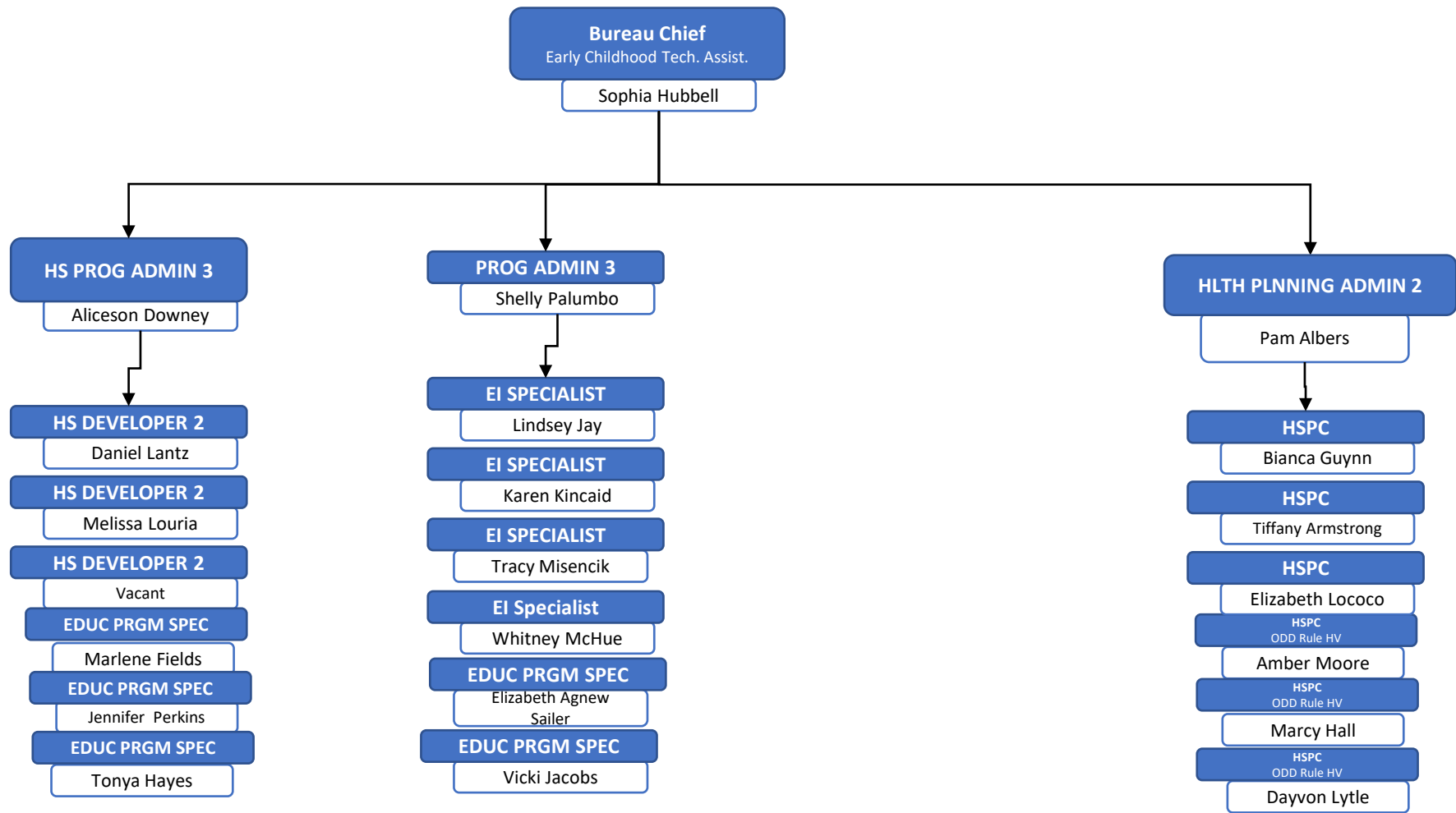
PROGRAM, POLICY, AND REGULATORY STANDARDS



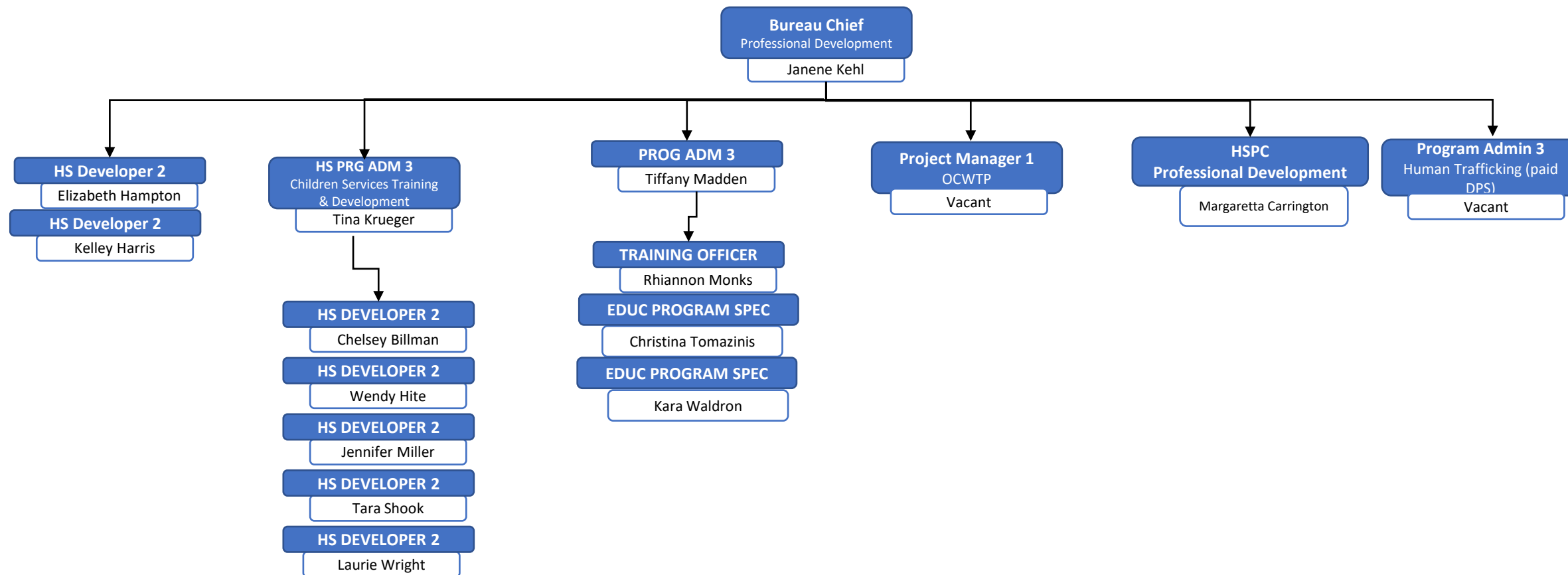
CHILDREN SERVICES SYSTEM PRACTICE ADVANCEMENT



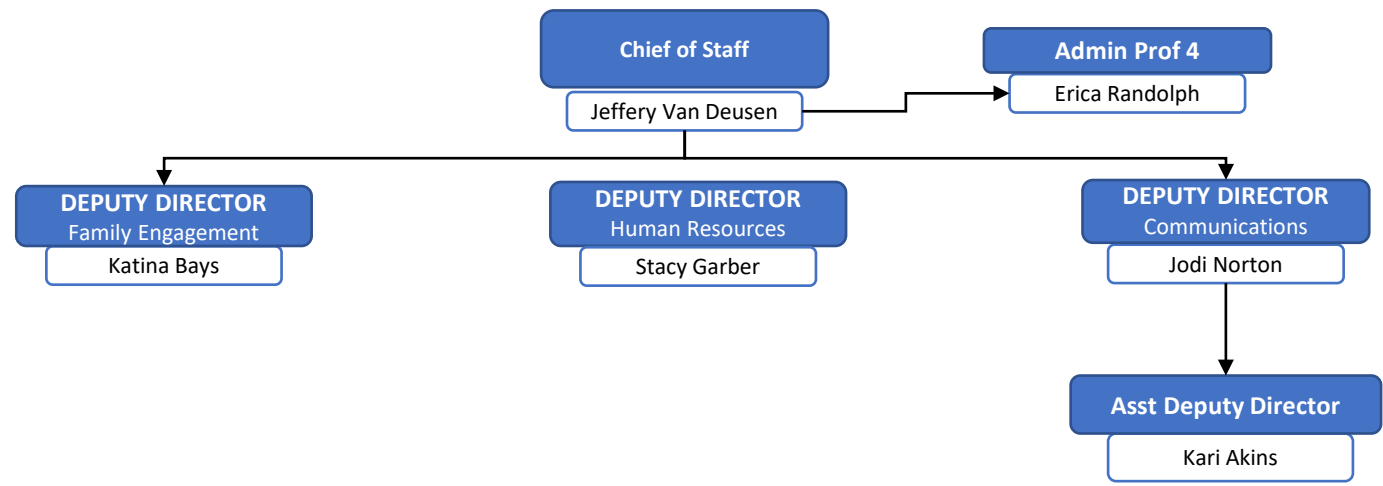
EARLY CHILDHOOD PRACTICE ADVANCEMENT



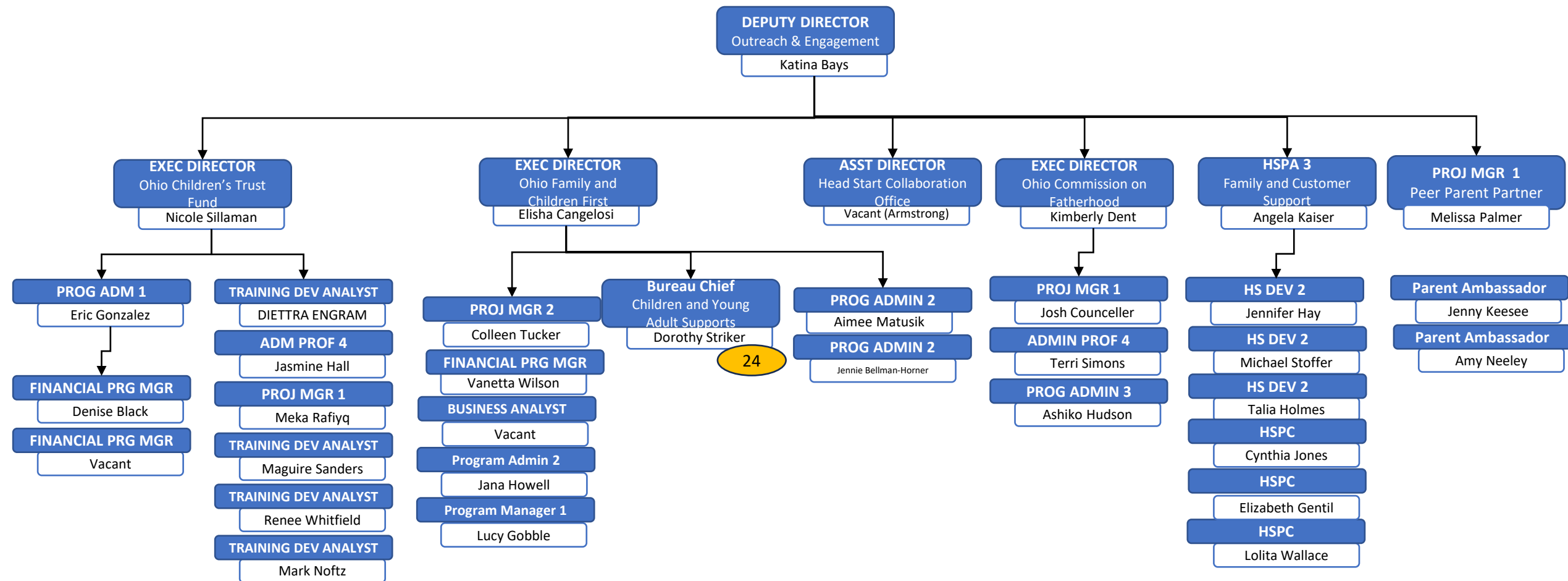
PROFESSIONAL DEVELOPMENT



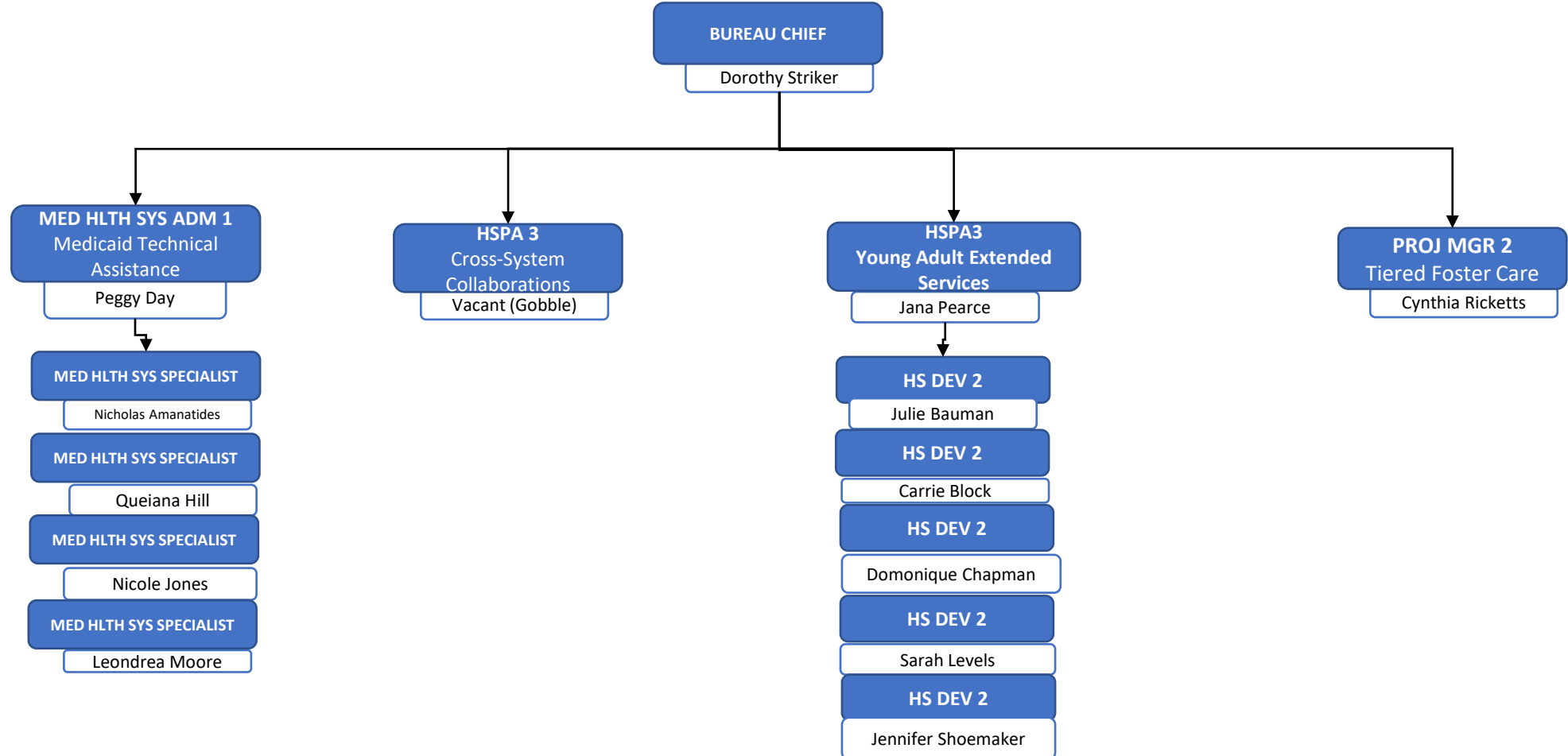
CHIEF OF STAFF



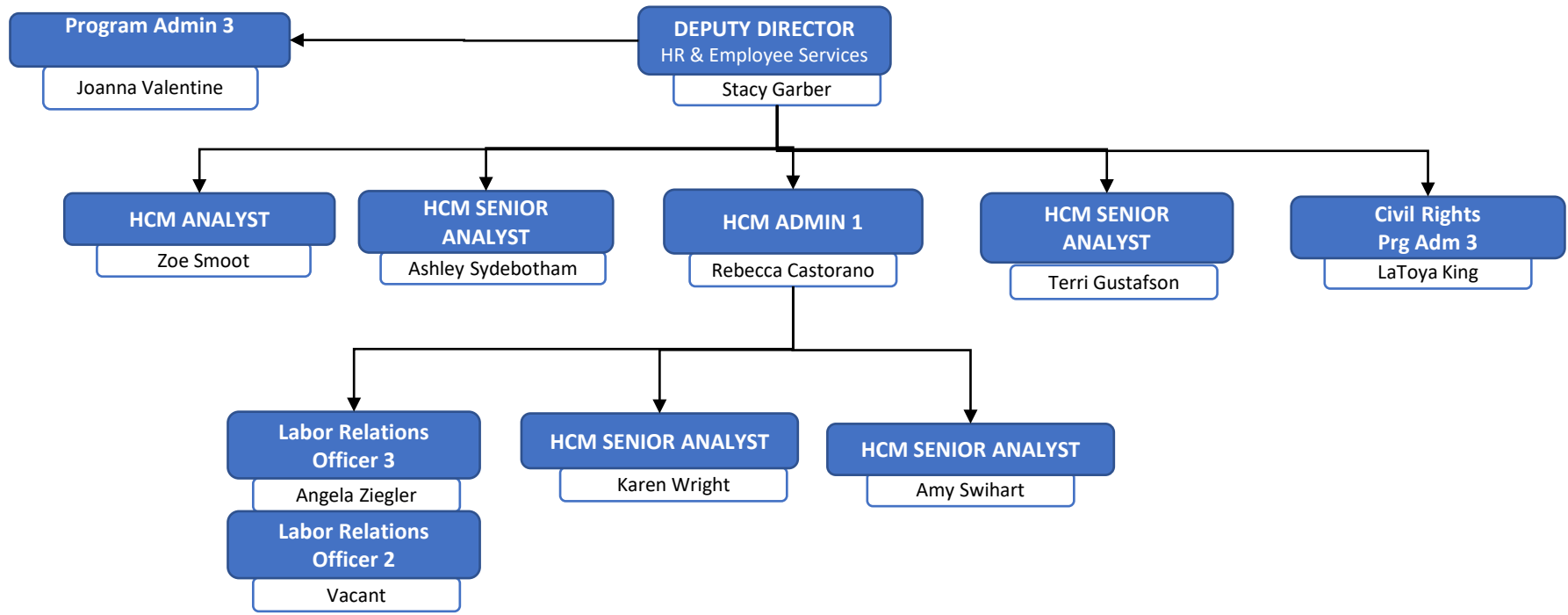
OUTREACH & ENGAGEMENT



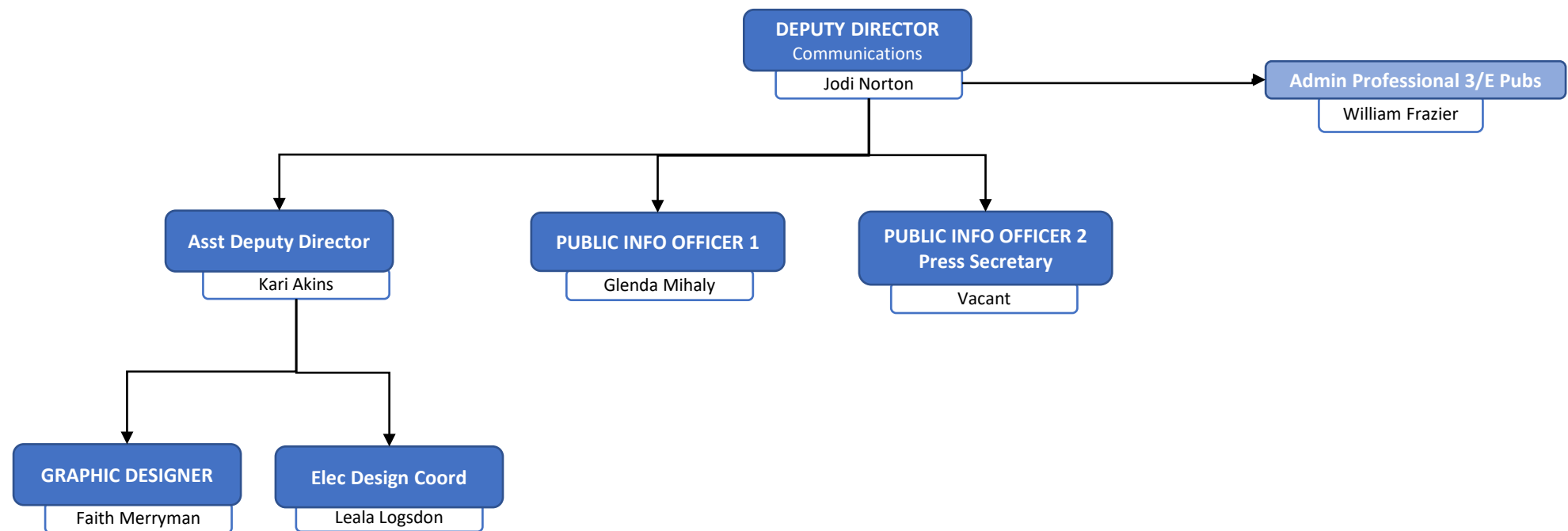
CHILDREN AND YOUNG ADULT SUPPORTS



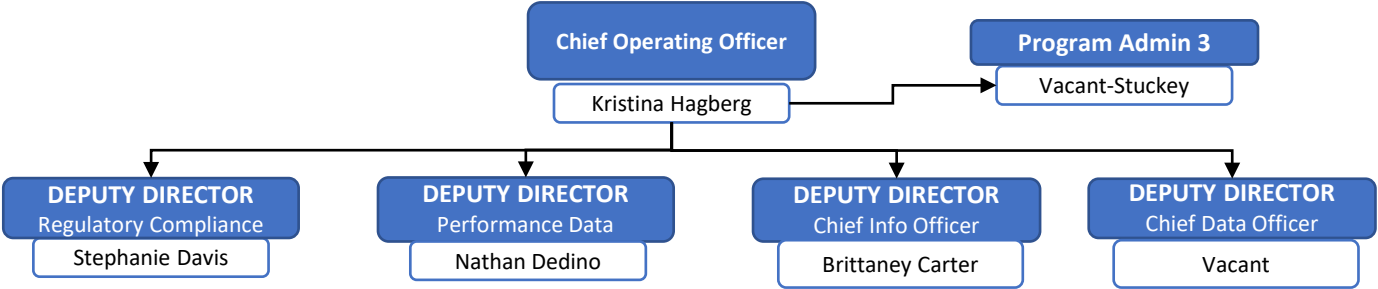
HUMAN RESOURCES



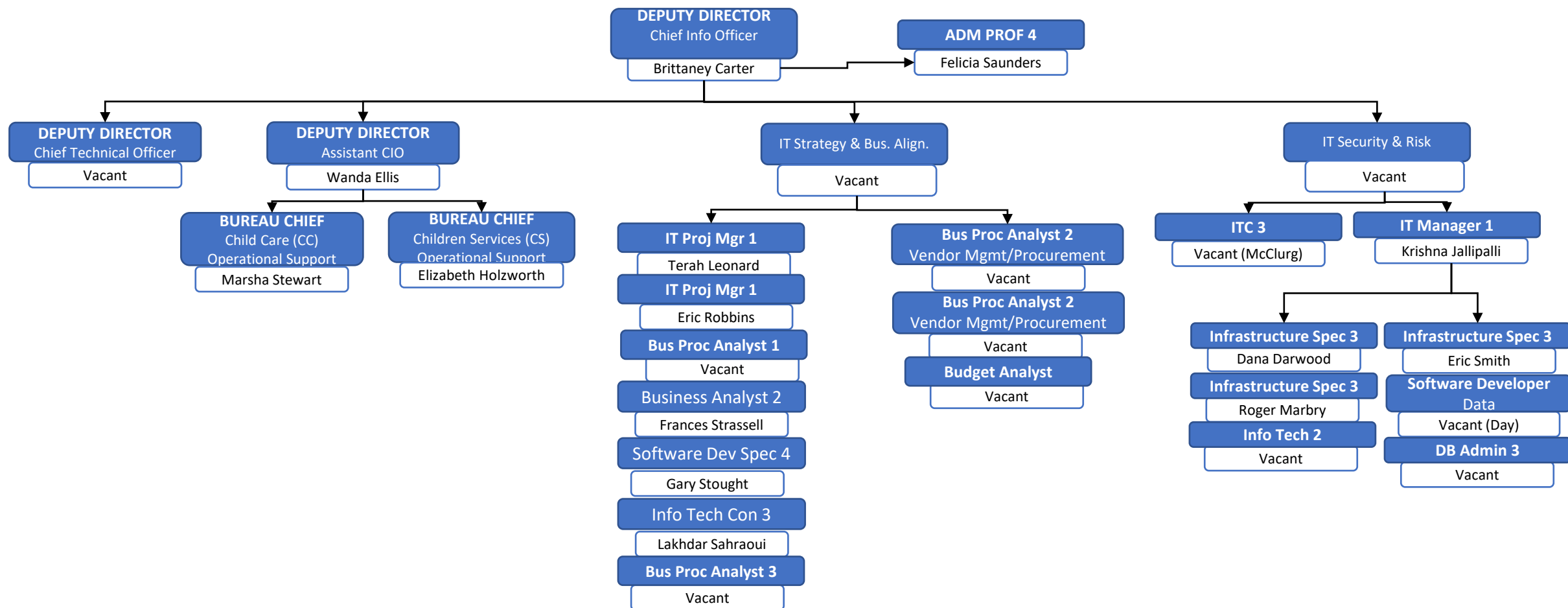
COMMUNICATIONS



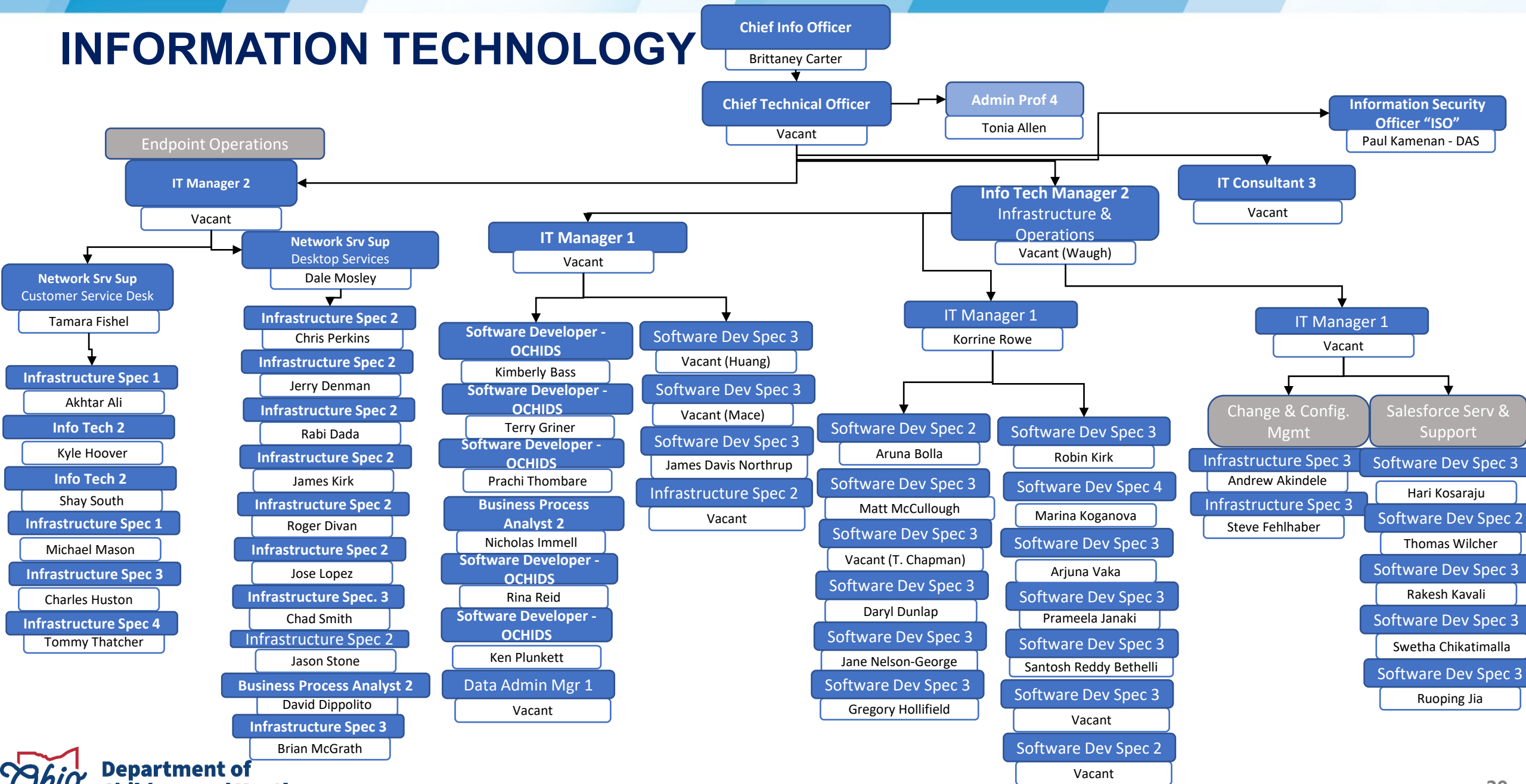
CHIEF OPERATING OFFICER



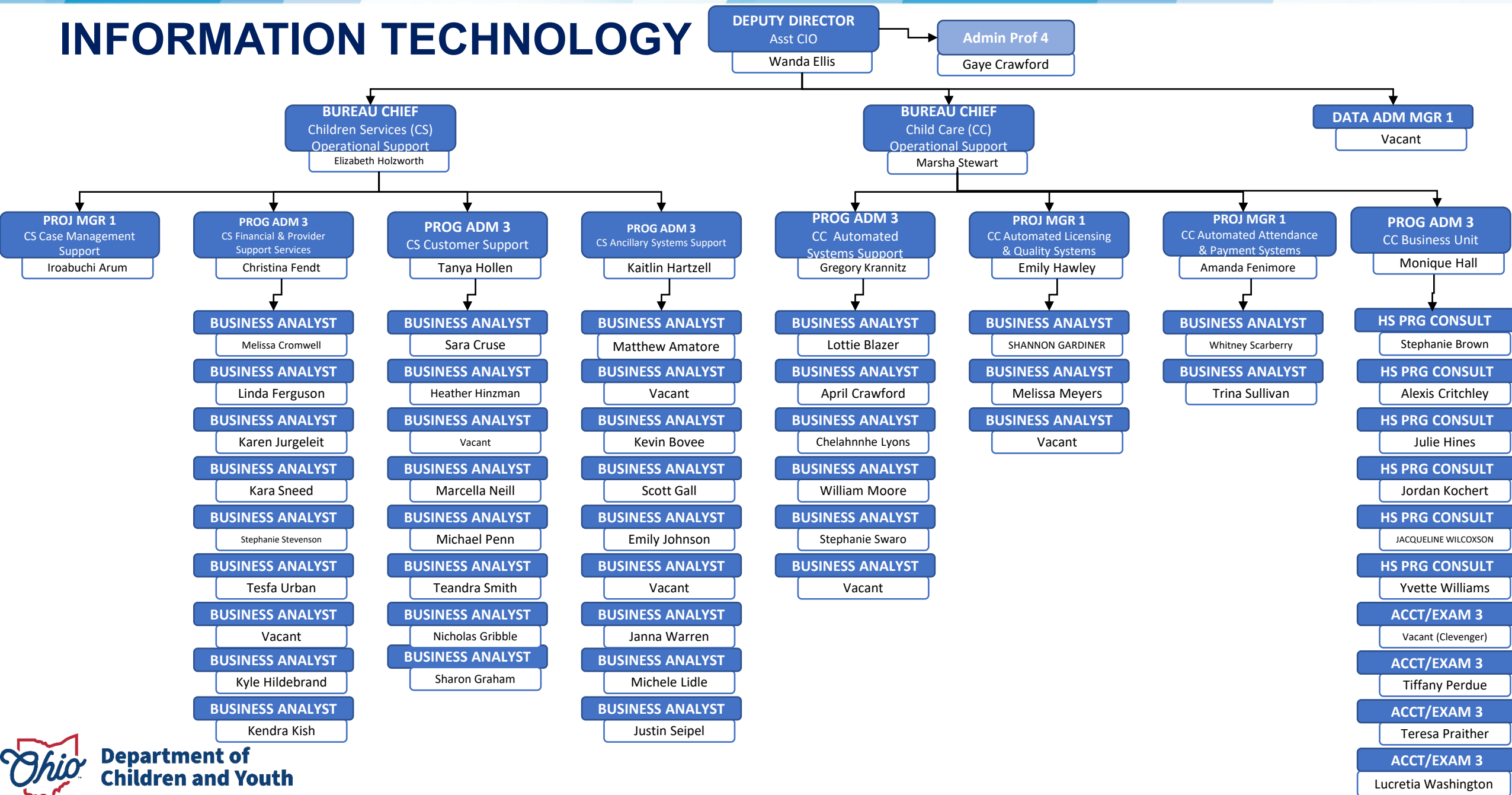
CHIEF INFORMATION OFFICER



INFORMATION TECHNOLOGY



INFORMATION TECHNOLOGY





**THE HEART
OF IT ALL™**

Ohio.org

OHIO.ORG